



Working with Students with "RAD" **(Reactive Attachment Disorder)** **Presented by Dr. Edward K. Schultz**

This session will assist educators in **understanding manifestations of RAD** in school-age children along with other common childhood psychiatric disorders and in **developing educationally therapeutic supports** for students with such disorders (including: individual behavior supports, classroom supports, and family and inter-agency collaboration).

February 15, 2018

8:30 am - 3:30 pm

Workshop #70621

Embassy Suites - Laredo

www.esc1.net/staffdevelopment

Contact Information :

Angelica Hinojosa

956.795.0000

ahinojosa@esc1.net

Veronica Gonzalez

956.795.0000

vgonzalez@esc1.net



REGION ONE ANNUAL DTC TRAINING

Each year the Student Assessment Division at TEA invites education service center personnel to attend a training session regarding the administration procedures for, and changes in, all components of the Texas student assessment program. The education service center personnel then offer this training to district testing coordinators to assist in preparing school district personnel for the assessment program. This process fulfills a critical role in ensuring that all students are assessed appropriately. This year training is limited to the district testing coordinator and two additional staff members per district to attend the training session. It is recommended that the two additional persons have the ability to provide technical support for: (1) the bilingual/ESL program and (2) the special education program during the training sessions that will be provided for district personnel. District Testing Coordinator manuals will not be provided at the ESC training. The manual will be available for download on the TEA website

EDINBURG

Workshop #65994
January 17, 2018

LOCATION: Region One ESC
1900 W. Schunior St

LAREDO

Workshop #66960
January 23, 2018

LOCATION: Embassy Suites
110 Calle Del Norte Dr

LOWER VALLEY

Workshop #66823
January 24, 2018

LOCATION: Harlingen CISD
407 N. 77 Sunshine Strip, Harlingen

CONTACTS

Brenda de la Garza
Education Specialist
Program

bdelagarza@esc1.net
(956) 984-6202

Karina E. Zuno-Chapa
Director of Language Proficiency,
Biliteracy, and Cultural Diversity
kchapa@esc1.net
(956) 984-6246

Angelica Hinojosa
Education Specialist
Laredo Office
ahinojosa@esc1.net
(956) 795-0000

Time: 8:30 am to 4:00pm



WORKSHOP # 71144

ALIGNING CURRICULUM, INSTRUCTION AND ASSESSMENT FOR STUDENTS WITH SIGNIFICANT COGNITIVE DELAYS

DEVELOPED BY THE LOW INCIDENCE STATEWIDE NETWORK TO PROVIDE GUIDANCE TO TEACHERS WORKING WITH STUDENTS WITH SIGNIFICANT COGNITIVE DELAYS. THE TRAINING WILL FOCUS ON HOW TO BRING ALL THE PIECES TOGETHER SO THAT INSTRUCTION IS ALIGNED TO THE TEKS, ASSESSMENT AND THE IEP, IN ORDER TO PREPARE STUDENTS FOR STAAR ALT AND LIFE! PARTICIPANTS WILL ALSO RECEIVE ACCESS TO RESOURCES SUCH AS THE CRITICAL CLASSROOM COMPONENTS CHECKLIST, A BEST PRACTICE RUBRIC FOR SELF-EVALUATION AND THE NEW MONTHLY INSTRUCTIONAL GUIDE THAT WILL SUPPORT TEACHERS THROUGHOUT THE YEAR.

JANUARY 25, 2018

8:30 - 4:30

RAMADA PLAZA/LAREDO - JACARANDA
800 GARDEN STREET LAREDO



Region One

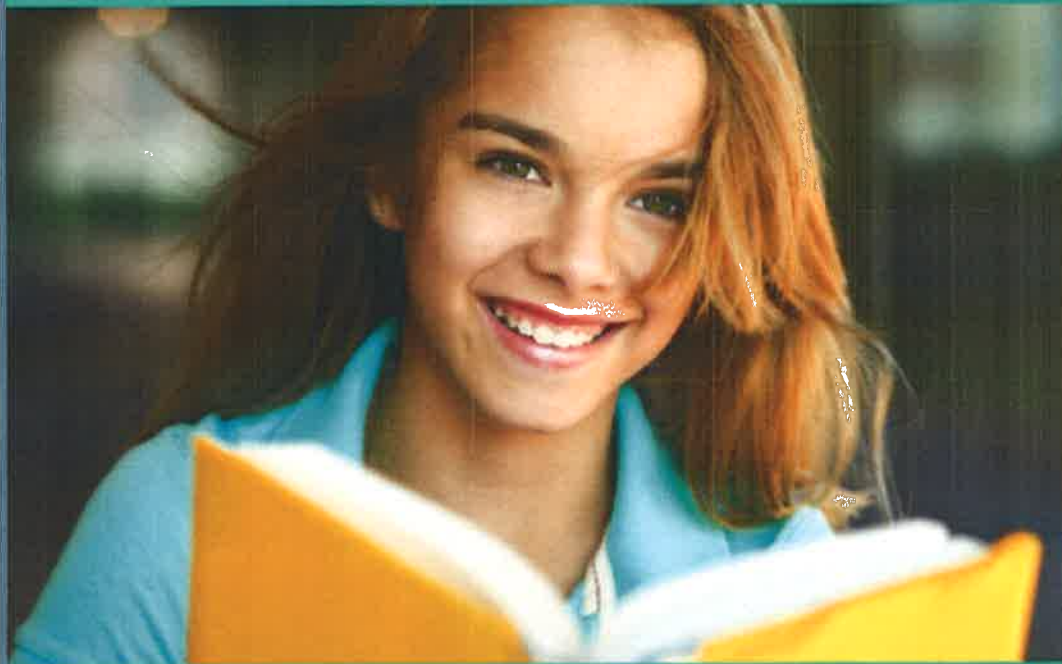
EDUCATION SERVICE CENTER

'Students First'

CONTACT: AHINOJOSA@ESC1.NET OR GAVALOS@ESC1.NET
956-786-0000 OR 956-984-8263
ONLINE REGISTRATION AT WWW.ESC1.NET/STAFFDEVELOPMENT
FEE: NO FEE

TEACHING THAT HEALS
THE BRAIN WITH

Dr. Sandy Gluckman



www.drsandygluckman.com
972 - 758 - 1246



**Region One Education
Service Center**

50 Years of Excellence

Using Neuroplasticity in the Classroom is Easy and Life-Changing for Teachers and Students.

THE AGENDA

What Neuroplasticity is. | How and why it is transforming education. | Practical ways to use neuroplasticity in any classroom with any curriculum and all kids. | How your life and the life of your students will change.

ABOUT THE WORKSHOP

Interactive and experiential – the theory is converted into a real life teaching experience. | Attendees will experience neuroplasticity personally through the way in which Dr. Sandy delivers the program content. | The attendees practice using the tools in the workshop.

With the powerful, easy-to-use tools learned in this program, behavior and learning challenges in the classroom become life-changing opportunities for stretching and healing the student's brain ...instead of just managing the problem.

THE RESULT

Students understand and retain what you are teaching in a whole new way. | Focus and attention improves. | They strengthen their sense of self-worth. | They build emotional resilience which reduces difficult behavior. | Develop the ability to self-regulate.



DATE / TIME

March 6, 2018
8:30 am - 4:00 pm

CONTACT INFORMATION

Angelica Hinojosa
(956) 795-0000
ahinojosa@esc1.net

Veronica Gonzalez
(956) 795-0000
vgonzalez@esc1.net

Sylvia Gamez
(956) 795-0000
sgamez@esc1.net

LOCATION

Embassy Suites – Laredo
110 Calle del Norte
Laredo, TX 78041
(956) 723-9100

REGISTRATION INFORMATION

www.esc1.net/staffdevelopment
Workshop # 72486

NO FEE!

"A teacher that understands and applies the newest discoveries in neuroscience can literally transform the student's life."

WHAT TEACHERS SAY:

"I truly believe this will change my life and my students' lives. Everyone needs this."

"Outstanding program that has given me such hope! Can't wait to use the tools and see the results."

"The workshop was an eye-opener! You have given me hope, not only as a teacher but also as a parent."

"An amazing new look at myself as a teacher. Has encouraged me to approach my students differently."

"This has been incredibly changing, both personally and professionally. I feel encouraged to continue this work in my own life and in my classroom."



ABOUT **Dr. Sandy Gluckman, PhD** *Learning and Behavior Specialist*

Dr. Sandy is a learning and behavior expert, author, educator and international speaker. She holds a degree in Clinical Psychology with a PhD in teaching and learning with both sides of the brain. Dr. Sandy's internationally acclaimed program, ***Teaching That Heals The Brain***, is the culmination of a long history of teaching experience as well as clinical work with children struggling with learning and behavior challenges.

Thousands of teachers around the globe have been empowered by her knowledge and practical tools. Educators describe her approach to teaching and parenting as 'eye-opening, a breath of fresh air' and 'life changing.'

Dr. Sandy is an expert in the latest developments in neuroscience, functional medicine, psychology and interpersonal neurobiology. She is the author of two books: *Parents Take Charge* and *Who's in the Driver's Seat?*

LEARN MORE AND CONTACT US

Websites: www.drsandygluckman.com

Email: sandy@gluckmangroup.com

Telephone: 972-758-1246

Copyright ©2017 Sandy Gluckman. All rights reserved. This may not be reproduced in any form without written permission advanced from The Gluckman Group Inc. International rights and foreign translation available only through negotiation with The Gluckman Group Inc.



Every Move Counts, Clicks and Chats

Presented by Jane Korsten, MS/SLP

This three-day workshop presents non-traditional assessment and intervention strategies appropriate for the development of communication in individuals having severe multiple differences, developmental differences, and/or autism. Information is relevant to the needs of those individuals who are currently unable to communicate their wants and needs spontaneously in their environment, regardless of age or severity of physical and/or cognitive differences. Techniques incorporate current research in the areas of communication, education and sensory integration.

Intended Audience:

All SPED Personnel working with Life Skills students, SLPs, SLPAs, parents
(professional CEs pending from TSHA)

**18 CPEs
available**

— **NO FEE** —

Workshop # 69585

January 26, February 27, May 3, 2018

8:30 am to 4:00 pm

Location:

Embassy Suites Hotel

Room I & II

110 Calle del Norte

Laredo, TX

Register online at www.escl.net/staffdevelopment

Each participant will receive a copy of *Every Move Counts, Clicks and Chats*

Contact Marguerite Horney, 956-984-6264 or Angie Hinojosa 956-795-0000

Region One ESC Education Specialists



2017-2018 EVALUATION WEBINARS

September 12, 2017

The Need for the REED:
Who, What, When, Where and How
Crissy McDaniel
Workshop #67584

Participants will review the legal requirements of a REED and best practices when engaging in the REED process.

October 10, 2017

"A Neurodevelopmental Approach
to Assessment"
Craig Pohlman
Workshop #67587

Learning assessments can and should be about describing students. What can they do well? How can they be successful? If they struggle, what are the specific reasons, or breakdown points?

Dr. Craig Pohlman will present a neurodevelopmental framework for planning assessments, interpreting results, and communicating findings. He also will discuss tips for revealing a learner's strengths and weaknesses.



December 12, 2017

Executive Functions:
What are they and how do we evaluate them?
Cheryl Chase, Ph.D.
Workshop #67609

Brief description: "Executive functions" is a term used to describe a broad set of cognitive skills that, when working properly, allow students to manage impulses, work in a deliberate and thoughtful manner, and organize their time and materials. When development of these skills is delayed, as is often the case in those with learning disabilities, ADHD, or emotional disorders, academic performance suffers.

When working with students who have special educational needs, it is imperative that professionals also consider whether or not the student is displaying age-appropriate executive skills; additional assessment and intervention may be necessary. This workshop will begin by defining the term "executive functioning" using clear, easy to understand terms, and then we will investigate several of the most common tools used to assess the executive functions including semi-structured interviews, standardized symptom inventories (e.g., Conners 3, BREIF) and formal psychometric tests (e.g., the Delis Kaplan Executive Function System).

January 9, 2018

Supporting Students who have
Weak Executive Functioning;
Strategies and Tools to Help.
Cheryl Chase, Ph.D.
Workshop #67610

Brief description: "Executive functions" is a term used to describe a broad set of cognitive skills that, when working properly, allow students to manage impulses, work in a deliberate and thoughtful manner, and organize their time and materials. When development of these skills is delayed, as is often the case in those with learning disabilities, ADHD, or emotional disorders, academic performance suffers. When working with students who have special educational needs, it is imperative that professionals also consider whether or not the student is displaying age-appropriate executive skills; additional assessment and intervention may be necessary. This workshop will begin by defining the term "executive functioning" using clear, easy to understand terms, but the majority of the time will be spent describing many concrete, immediately usable strategies that can be implemented to support a student with weak executive functioning.

November 14, 2017

Writing Appropriate PLAAFP Statements
Cara Wylie
Workshop #67607

The PLAAFP statement establishes the starting points in developing annual goals and serve as baseline data points. Because of this, it is important to make sure it includes all the necessary information in a way that ensures all stakeholders can understand the student's unique and current academic and functional levels. During this session, participants will review what must be included in a PLAAFP and how to use information from a FIE to write data-based, objective statements.



March 20, 2018

What, When, Where for PWNs,
Cynthia Buechler, Attorney
Workshop #67618

Ever wonder when to do a Prior Written Notice (PWN), and what all should be included. Cynthia Buechler will discuss the ins and outs of PWN paperwork and how a legal PWN should look.

April 10, 2018

Essential Elements of an FIE,
Anna L. Walsh-Mondragon
Workshop #67611

Have you always wanted others to look at Special Education evaluation results for more than just eligibility? Come learn about a rubric that will support the writing of FIEs in order to increase the instructional relevance. Your FIE can become an even more powerful tool for supporting student success. This rubric can support evaluators with a way to analyze the details of their FIE and improve on the quality of report writing as well as support supervisors of those evaluators with a tool to objectively look for areas of improvement.

Register at www.esc1.net Contacts: Brenda de la Garza bdelagarza@esc1.net
Hilda Aguirre hvaguirre@esc1.net